



## Z-Box

### Blackout Systems

The most resistant shade for exterior installation, since its zipper channel system allows a perfect attachment of the fabric that guarantees a great resistance to the wind.

#### COLORS:

- ☐ White RAL 9016
- ☐ Grey RAL 9006
- ☐ Black RAL 9011
- ☐ Anthracite RAL 7016
- ☐ Metallic Grey

#### Operating system

Motor

#### Double drop

With 1 and 2 operating systems

#### Options

Digital Printing

# Maximum Resistance

## Exclusive zipper system with Zip Deep guides and Max bottom rail

The zipper is more hidden with the new **Zip Deep guide**, optimizing the blind's blackout power when used with dark fabrics.

The new **Bandalux-patented stainless steel spring system** ensures that fabric stays taut and can handle the force of the wind.

The new Max bottom rail enhances the drape, strength and tautness of the fabric while optimizing its performance, even with narrow blinds.

Covers surfaces up to 20 m<sup>2</sup>.

PATENTED BY  
BANDALUX

THE FABRIC  
NEVER COMES  
OUT OF THE  
CHANNELS



## Great wind resistance

Z-Box blind obtained the highest grade, the Class 6, according to the EN13561 standard in a test carried out by an independent laboratory.

The wind resistance test continued beyond the highest mark and the Z-Box system was able to resist, under test conditions, wind speeds of up to three times (265 km/h) the Class 6 standard for a 200 x 200 cm blind.

## Strength and reliability

The Bandalux - developed end pieces are equipped with more robust spindles.

The support includes high-precision rollers with bearings that deliver quieter, **smoother movement and perfectly concentric rotation.**



## Double drop (transmission)

Bandalux's transmission delivers enhanced smoothness enabling two rolling tubes to operate with just one operating system.



## Quieter motor

All motors incorporate a new multi-material technology blind drive that has been designed by Bandalux to reduce the noise and vibrations that the motor makes.



### BANDALUX

230V



### BANDALUX SENSOR

230V



### SOMFY®

230V



## Sensor motor with safety features

This radio frequency motor is equipped with safety features to stop the blind from moving if it detects an obstacle, preventing potential damage to people and objects.

When an obstacle is detected, the motor pauses and then tries to complete the command three times. The motor will then stop if it continues to detect the obstruction after the third attempt.



## Maximum opacity

The system that offers the highest opacity **combined with fabrics from the blackout collection** from Bandalux.



## Self-supporting



Thanks to the self-supporting channels, there is no need for additional brackets.

Such brackets are optional and available on request for ceiling or wall installation.



## Energy savings

When installed outdoors and combined with the Polyscreen® fabric, this system **can save up to 70 %** in air conditioning, while guaranteeing **optimal visual and thermal comfort**.

## Insect screen

The **motorized Z-Box** is also available with insect screen fabric.



# Maximum Resistance

## Improved chain operating: rugged, smooth and durable

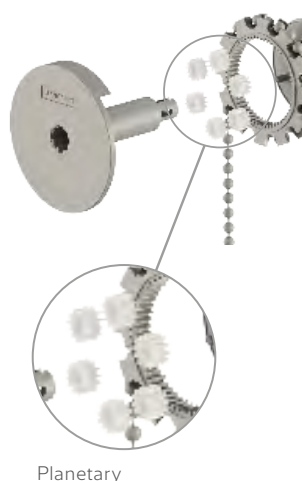
Smooth and silent drive, thanks to the use of materials that allow a high precision geometry.

The springs, of German technology and manufacture, calibrated and heat-treated, provide greater resistance to the system.

All elements susceptible to wear and tear are made of steel, thus ensuring the durability of the entire mechanism.



## Maximum comfort and softness of use



Planetary

### Redux mechanism

The REDUX mechanism has an internal planetary gear system that reduces drive effort by up to 30%.

The planetary system requires a chain displacement higher than the height of the shade, so this system does not have mechanical stops to fix the end of the stroke at the top and at the bottom.

**Note:** Since the system has no limit switch, users need to be careful when operating the blind to keep the fabric from unrolling/rolling up too far.



## New motorized option with external solar panel



NEW

The Bandalux Solar Station Kit offers a motorized, sustainable and self-sufficient Z-Box solution powered by sunlight; no electrical installation required.

The kit includes a solar panel, a rechargeable battery and a motor, making it an eco-friendly and efficient choice that eliminates the need for electrical wiring.

To maximize sunlight capture, the solar panel and battery should be installed outdoors (e.g., on a façade or roof). The motor is built into the blind's tube or rod and connected to the solar panel with wiring.<sup>(1)</sup>

<sup>(1)</sup> Includes a 500 cm cable. Compatible with an optional 3 m extension cable.

## LYNX, smart blinds

The app that allows you to control all Bandalux window coverings solutions, wherever you are.

Compatible with:



**Easy. Comfortable.  
From anywhere.**

See **LYNX**  
price list

Available for Android and iOS.

### Contactless comfort

Manage your blinds from your Smartphone or via voice control.

### Atmospheres personalization

Program and automate as many scenes as you want and confirm the position of your blinds at any time.

### Peace of mind

Enable presence simulation scenes when you are away from home.

### Efficiency and savings

Take advantage of sunlight cycles, react to the climatic conditions and, as a consequence, save on your electricity bill.

### Connected environment

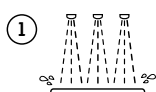
In addition to blinds, LYNX allows you to connect other elements such as music, lamps, fans...

## Air purifying shades

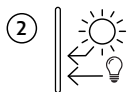
As a result of Bandalux' ongoing technological innovation and its commitment to sustainability, it has launched a new shade able to purify the air in any room.

### Application of a nanocoating on the technical fabric

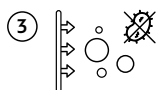
The shade is treated as follows:



A mixture of oxide minerals is applied to the shade's fabric.



This mixture is naturally activated by sunlight or artificial lighting.



When it is activated, any contaminant particles in the air are removed (viruses, bacteria, fungi, contamination, and volatile organic compounds).

### Great versatility

- Applicable to all Roller Shades systems, Box range, Fit Box, Skylight and Sliding Panel.
- Available in the Polyscreen® 550 and Mega BO fabrics, in a range of colors.

#### POLYSCREEN® 550 AIRPURE®



Ash Pearl White White Linen White Pearl

#### MEGA BO AIRPURE®



Alabaster Black Dark Grey White



More info.  
**AIRPURE®**

**BANDALUX**

**airPURE®**  
BLINDS & SHADES



### BASE PRICE LIST (INCLUDED IN THE PRICE)

#### CASSETTE



#### ZIP DEEP CHANNELS MAX BOTTOM BAR



#### COLORS

White RAL 9016
  Grey RAL 9006
  Metallic Grey
  Black RAL 9011
  Anthracite RAL 7016

❗ By default, Bandalux will provide the products in white, unless a different color is specified on the order form.

### COLLECTION AIRPURE®



#### AIRPURE® SHADES:

- **Collection Mega BO Airpure®** in the following colors: Alabaster, Black, Dark Grey and White.
- **Collection Polyscreen® 550 Airpure®** for indoor installation in the following colors: Ash, Pearl, White, White Linen and White Pearl.
- **Collection Polyscreen® 550 Airpure®** for outdoor installation in the following colors: Ash, Pearl and White.

### MOTORIZED OPTIONS



MOTOR <sup>(1)</sup>			AUTOMATISMS <sup>(2)</sup>		
			SINGLE-CHANNEL REMOTE CONTROL	MULTI-CHANNEL REMOTE CONTROL	OTHER
Hardwired	Bandalux	M2 50 6/32, 20/17	--	--	SOMFY® SMOOVE UNO Ref. 06700610B
		SENSOR 50 30/17			
	Somfy®	ARIANE 50 6/32			
		ATLAS 50 15/32			
Radio	Bandalux	ARIES 40 SHORT 4/16			
		MARINER 50 40/17 <sup>(3)</sup>			
	Somfy® RTS	MAESTRIA 50 6/17, 10/17, 15/17 <sup>(3)</sup>			
		MAESTRIA 50 25/17 <sup>(3)</sup>			
IO	Somfy® Silent <sup>(4)</sup>	SONESSE 50 6/28, 10/28, 15/17			
	Bandalux	R2 50 6/32	ELEGANCE 1 Ref. 06702000A	ELEGANCE 4 Ref. 06702100A	--
		R2 50 20/17 <sup>(3)</sup>			
Solar radio integrated panel	Bandalux	SENSOR 50 30/17	1 CHANNEL SENSOR TRANSMITTER Ref. 06700073	5 CHANNEL SENSOR TRANSMITTER Ref. 06700074	--
	Somfy® RTS	ALTUS 50 6/32, 15/17	SITUO 1 RTS Pure Ref. 06700970D	SITUO 5 RTS Pure Ref. 06700881D	--
		ALTUS 50 40/17 <sup>(3)</sup>			
Solar radio integrated panel	Somfy® RTS Silent <sup>(4)</sup>	SONESSE 50 6/28, 10/28, 15/17			
	Bandalux	SUNEA SCREEN 9/16, 6/32, 15/32	SITUO 1 IO Pure ref. 06700620B	SITUO 5 IO Pure REF. 06700625B	--
		SUNILUS 50 40/17 <sup>(3)</sup>			
Solar radio integrated panel	Bandalux	SUNEA 40 6/18, 10/12	1 CHANNEL TRANSMITTER Réf. 06700073	5 CHANNEL TRANSMITTER Réf. 06700074	--
		KIT SOLAR 40 6/16, 10/122			
	Bandalux	KIT SOLAR 50 20/16	1 CHANNEL TRANSMITTER Réf. 06700073	5 CHANNEL TRANSMITTER Réf. 06700074	--
		KIT SOLAR STATION 50 20/16			
Solar radio integrated panel	Bandalux	KIT SOLAR STATION 50 30/9			

❗ 1. See motor specifications on page 5. / 2. Required for shades with measurements exceeding 3000mm wide. / 3. Motor only compatible for indoor installation. / 4. Motor with electronic limit switch.

### REINFORCED BRACKETS AND CHANNEL SPACERS

#### CEILING INSTALLATION<sup>(1)</sup>



#### WALL INSTALLATION<sup>(1)</sup>



#### CHANNEL SPACER BRACKET



❗ Incompatible with frontally installed channels.

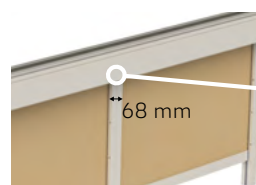
❗ (1) Brackets are visible and include fastening bolt.



#### ADJUSTMENT WEDGE KIT

❗ Bandalux will provide 3 units by default.

### DOUBLE DROP



#### DOUBLE DROP 1 operating system

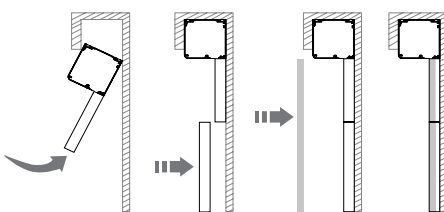


#### DOUBLE DROP 2 operating systems

## OTHER OPTIONS


## INSTALLATION ON CURTAIN ROD

Indicate this option on the order sheet if you wish to receive the side channels cut into two pieces to facilitate self-supporting installation inside the drapery.



## PERSONALIZATION



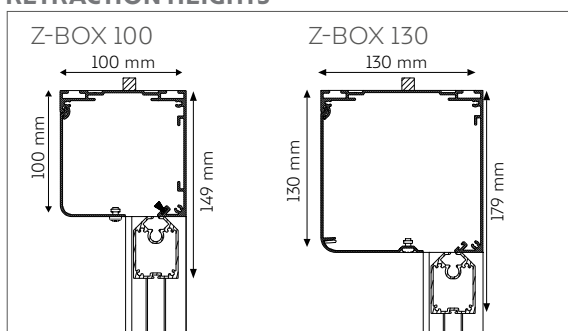
 Only available for indoor installation.

## OPERATING SYSTEMS AND MINIMUM SHADE WIDTH

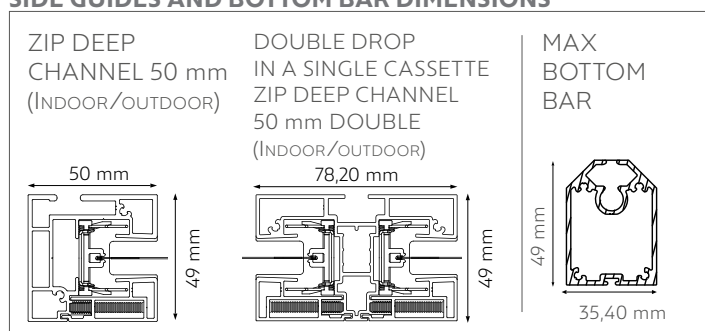
Type	Motor	Voltage (V)	ø mm	Nm	r.p.m	Power (W)	Amparage (A)	Minimum shade width (mm)
<div>LYNX COMPATIBLE</div> BANDALUX HARDWIRED	M2 50 6/32	230	50	6	32	120	0,52	670
	M2 50 20/17	230	50	20	17	160	0,70	720
	M2 50 40/17	230	50	40	17	240	1,04	710
	SENSOR 50 30/17	230	50	30	17	253	1,10	750
<div>NEW</div> BANDALUX RADIO	R2 50 6/32	230	50	6	32	120	0,52	720
	R2 50 20/17	230	50	20	17	160	0,70	740
	R2 50 40/17	230	50	40	17	240	1,04	710
	SENSOR 50 30/17	230	50	30	17	253	1,10	750
<div>NEW</div> BANDALUX RADIO SOLAR	KIT SOLAR STATION 50 20/16	12	50	20	16	72	6	700
	KIT SOLAR STATION 50 30/9	12	50	30	9	72	6	700
<div>LYNX COMPATIBLE</div> SOMFY® HARDWIRED	ARIES SHORT 40 4/16	230	40	4	16	65	0,28	550
	ARIANE 50 6/32	230	50	6	32	120	0,52	680
	ATLAS 50 15/32	230	50	15	32	240	1,04	760
	MARINER 50 40/17 <sup>(2)</sup>	230	50	40	17	270	1,17	810
	MAESTRIA 50 6/17 <sup>(2)</sup>	230	50	6	17	90	0,45	710
	MAESTRIA 50 10/17 <sup>(2)</sup>	230	50	10	17	120	0,50	710
	MAESTRIA 50 15/17 <sup>(2)</sup>	230	50	15	17	140	0,65	760
<div>LYNX COMPATIBLE</div> SOMFY® HARDWIRED SILENT <sup>(1)</sup>	MAESTRIA 50 25/17 <sup>(2)</sup>	230	50	25	17	170	0,80	760
	SONESSE 50 6/28	230	50	6	28	146	0,63	760
	SONESSE 50 10/28	230	50	10	28	180	0,78	760
<div>NEW</div> SOMFY® RTS	SONESSE 50 15/17	230	50	15	17	153	0,67	760
	ALTUS 50 6/32	230	50	6	32	90	0,39	810
	ALTUS 50 15/17	230	50	15	17	140	0,61	810
<div>NEW</div> SOMFY® RTS SILENT <sup>(1)</sup>	ALTUS 50 40/17	230	50	40	17	270	1,17	900
	SONESSE 50 6/28	230	50	6	28	146	0,63	940
	SONESSE 50 10/28	230	50	10	28	180	0,78	940
<div>NEW</div> SOMFY® IO	SONESSE 50 15/17	230	50	15	17	153	0,67	940
	SUNEA SCREEN 50 6/32	230	50	6	32	120	0,52	810
	SUNEA SCREEN 50 15/32	230	50	15	32	240	1,04	830
<div>NEW</div> SOMFY® RTS SOLAR	SUNILUS 50 40/17	230	50	40	17	270	1,17	900
	SUNEA 40 6/18	12	40	6	18	24	2	700
	SUNEA 40 10/12	12	40	10	12	32	2,67	700

 (1) Motor only compatible for indoor installation. / (2) Motor with electronic limit switch.

## RETRACTION HEIGHTS



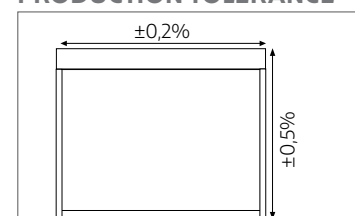
## SIDE GUIDES AND BOTTOM BAR DIMENSIONS



## SPACER BRACKET

Height of shade H	No. brackets per channel
H ≤ 1500 mm	2
1500 mm < H ≤ 2500 mm	3
2500 mm < H ≤ 3000 mm	4
3000 mm < H ≤ 4000 mm	5

## PRODUCTION TOLERANCE



[contract.bandalux.com](https://contract.bandalux.com)

[bandalux.com](https://bandalux.com)